

Click to begin



Maitre'D®

2005 Setup Guidelines

Maitre'D Full System Backup & Restore



Full System Backup & Restore

[Click to continue](#)

This document will guide you through the Backup of the Maitre'D Database from a Source computer and the Restoration on a Target PC.

Full System Backup **MUST** be performed on a regular basis by the end user at best daily, at least weekly, and at worst monthly, in case of computer failure.

This can also be useful to restore the database on another computer, to upgrade the server to a more powerful PC, or to bring a restaurant database to the dealers' office for further testing and troubleshooting

Step by step explanations will help you get through the process.



Full System Backup & Restore

[Click to continue](#)

Backup Process:

- 1) End Of Day on Source
- 2) Archiving Setup on Source
- 3) Save the Full System

Restore Process:

- 4) End Of Day on Target
- 5) Archiving Setup on Target
- 6) Restore the Full System

Manual Copies:

- 7) Archived Checks
- 8) INI files
- 9) MAC files

This document will walk you through these processes step by step.



Step 1: End Of Day on Source



IMPORTANT:

The End Of Day performs an internal backup copy of the working database.

Saving the Full System copies that internal backup towards an external media,
so that it can be done during restaurant operations.

Therefore, any changes made to the working database since the last End Of Day will NOT be included when you Save the Full System.

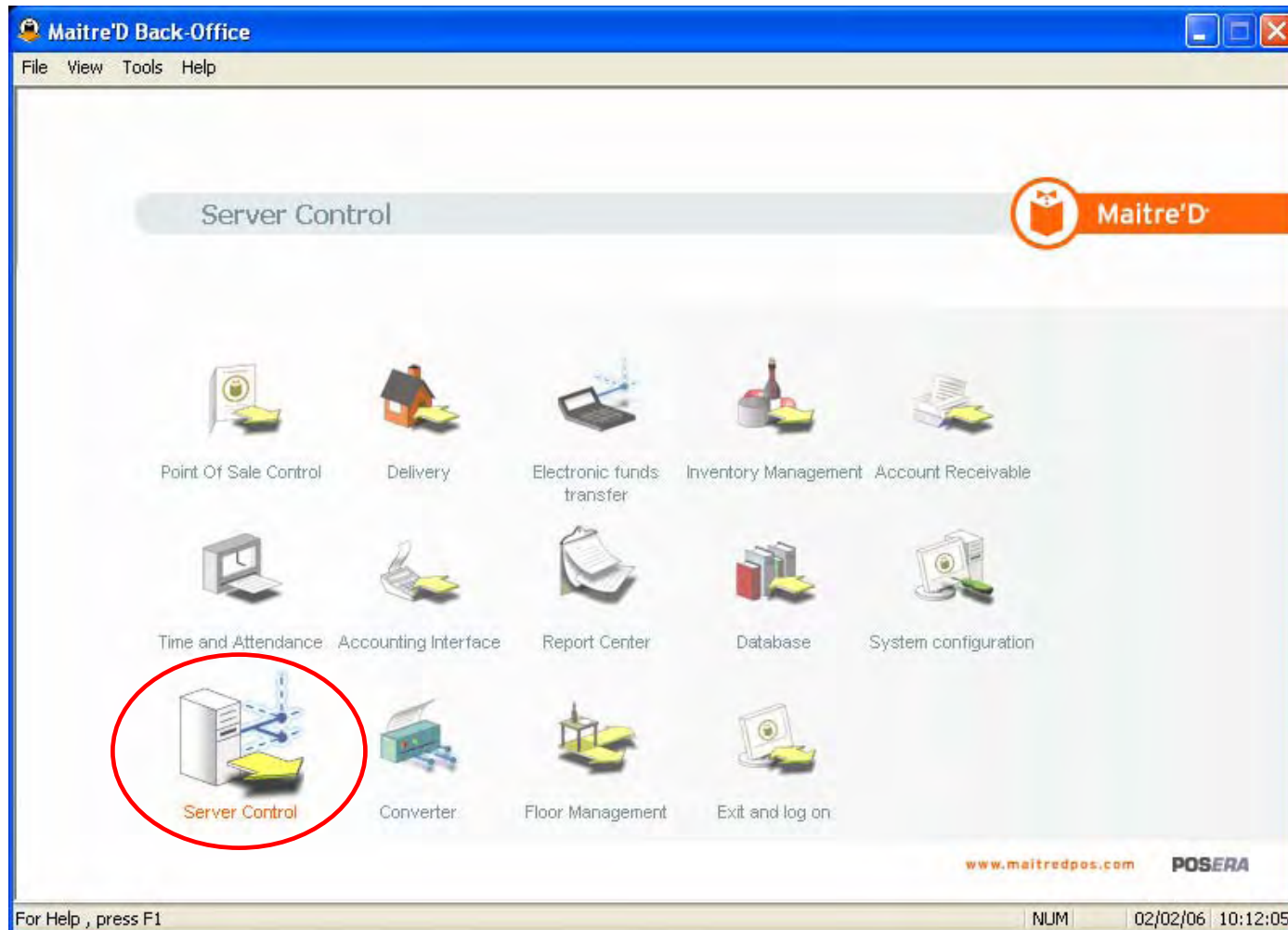
To include all the current programming, always perform an End Of Day just before you Save the Full System.



Step 1: End Of Day on Source

Click to continue

On the Maitre'D Back-Office screen, click on the Server Control icon.

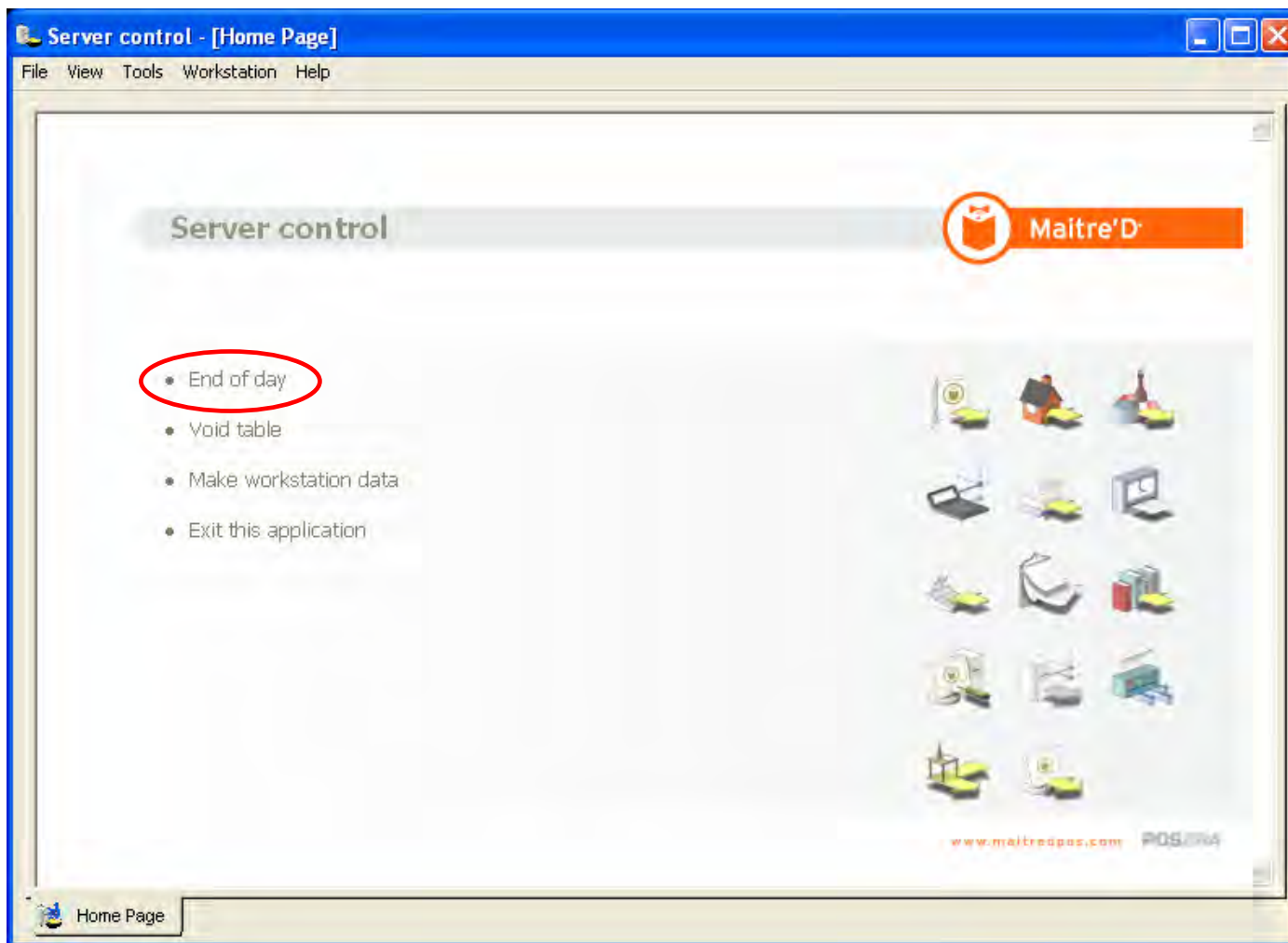




Step 1: End Of Day on Source

Click to continue

Click on End Of Day.



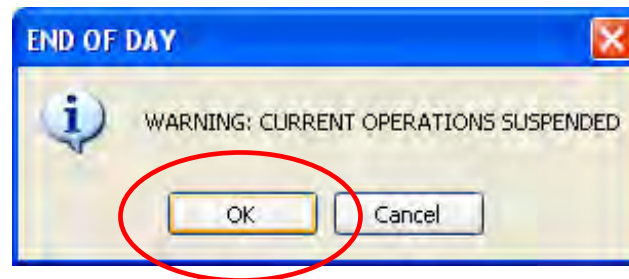


Step 1: End Of Day on Source

[Click to continue](#)

The End Of Day also compiles daily sales information for various reports, and must be executed each day.

When prompted to stop workstation operations, click on OK.



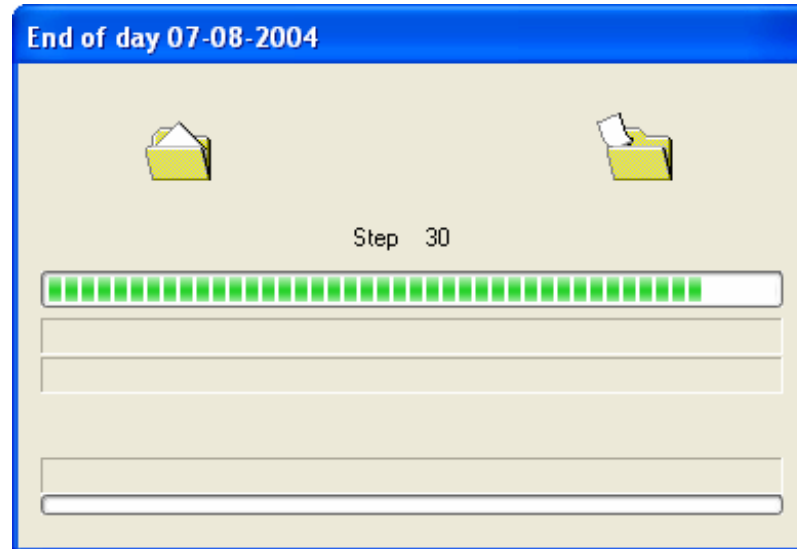


Step 1: End Of Day on Source

[Click to continue](#)

The End Of Day makes an internal copy of the database into the Backup Path defined in System Configuration / View / Options / Directories.

Note: The End Of Day can also be setup to start automatically at a set time every day by enabling the Automatic End Of Day option and filling the Time For End Of Day field in Server Control / View / Options.

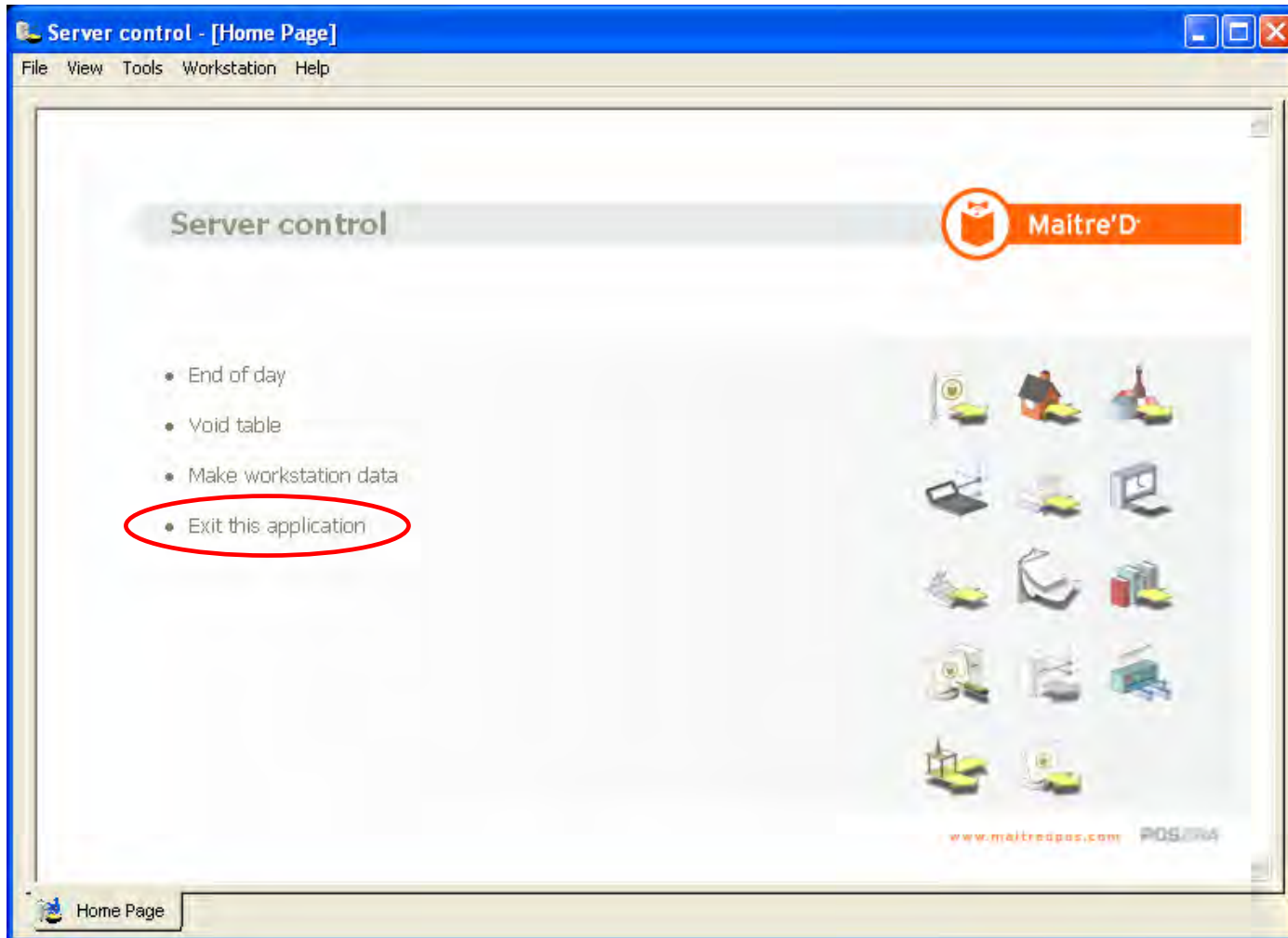




Step 1: End Of Day on Source

Click to continue

Once the End Of Day is completed, exit from the Server Control module.





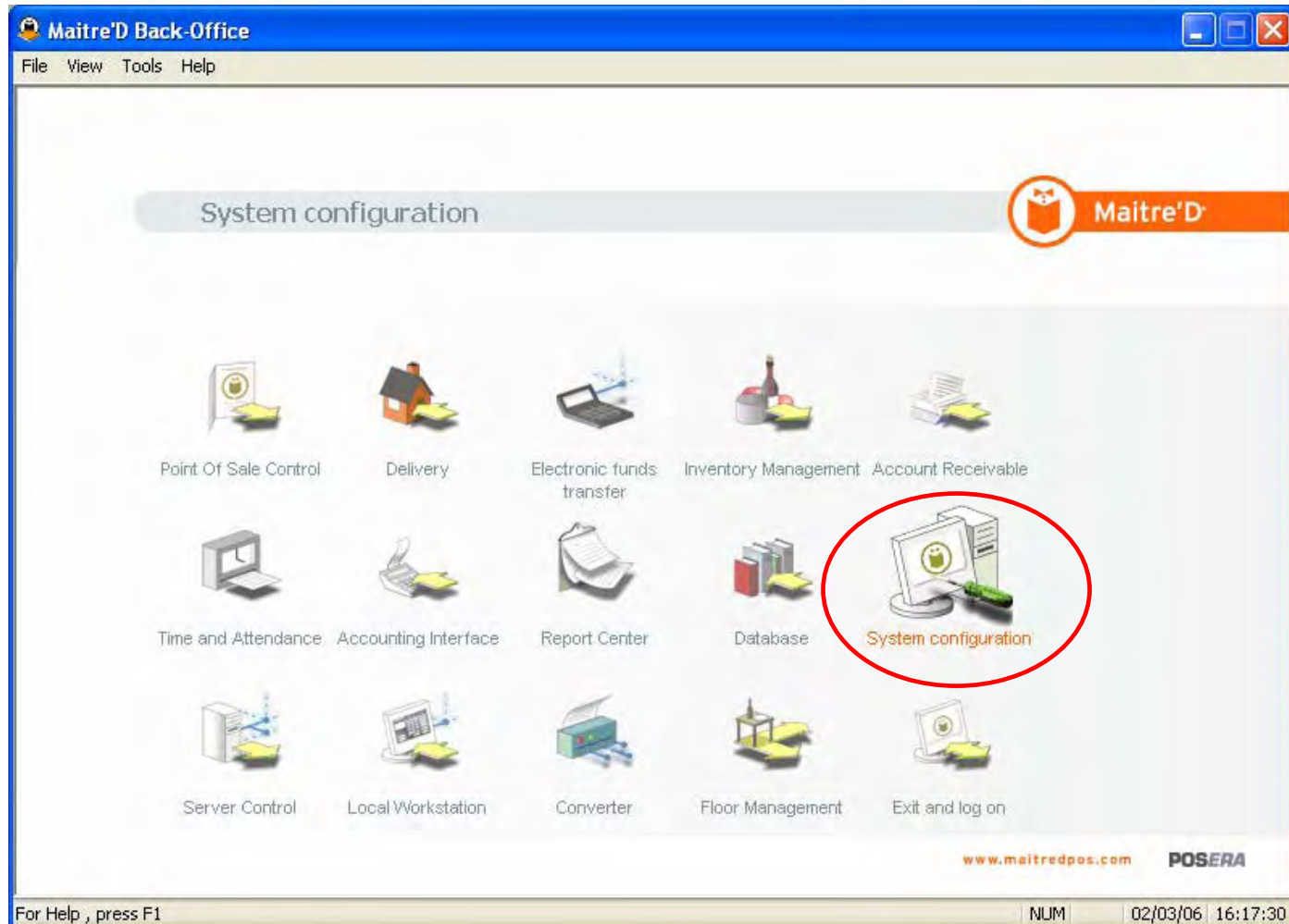
Step 2: Archiving Setup on Source



Step 2: Archiving Setup on Source

Click to continue

On the Maitre'D Back-Office screen, click on the System Configuration icon.

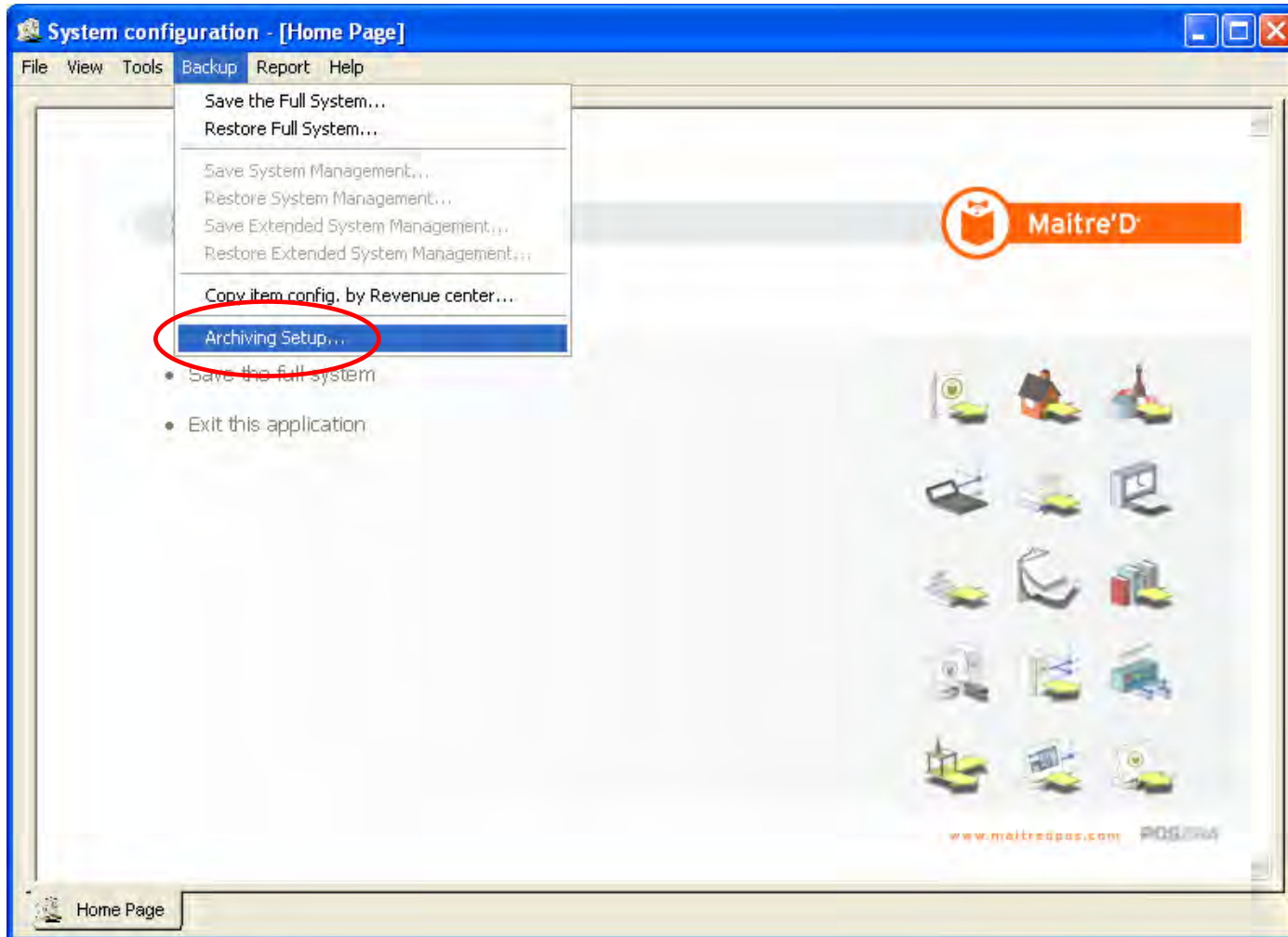




Step 2: Archiving Setup on Source

Click to continue

Click on Backup, then click on Archiving Setup.



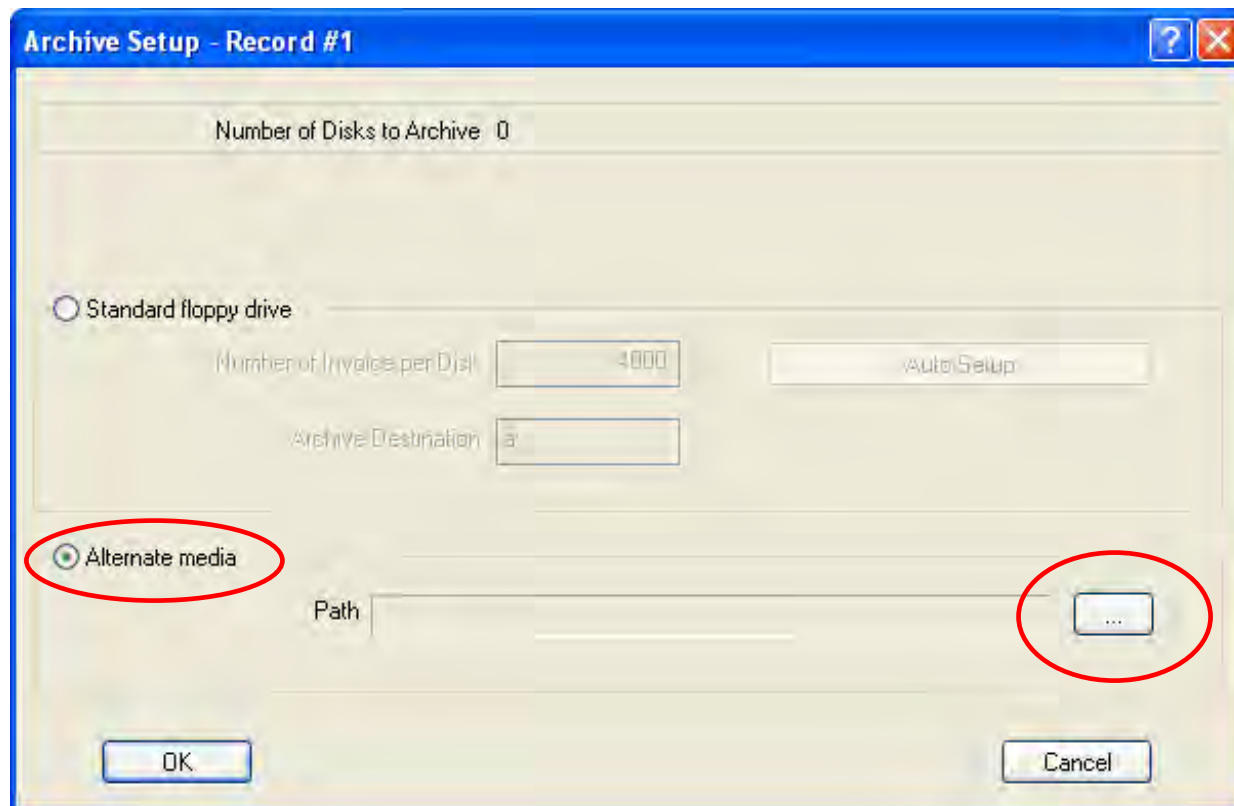


Step 2: Archiving Setup on Source

Click to continue

Enable the Alternate Media option.

Click on the Path button.



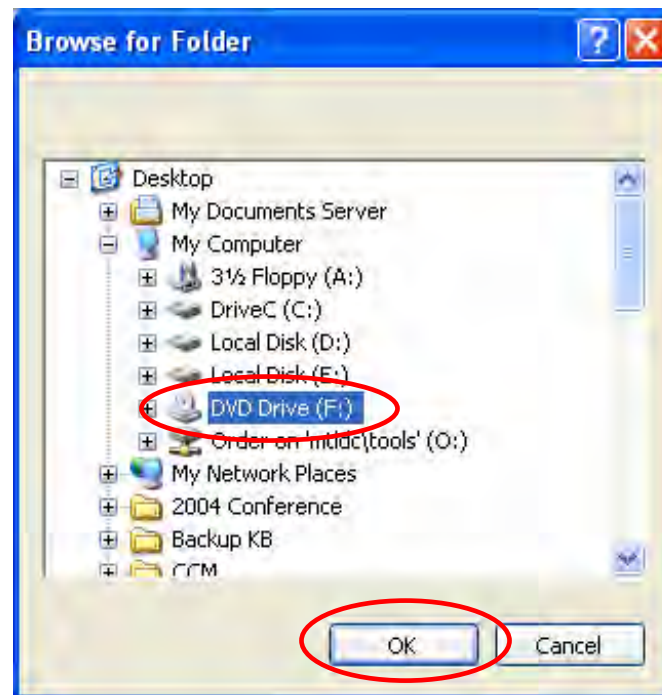
Step 2: Archiving Setup on Source

[Click to continue](#)

Select a high capacity removable media or a mapped hard disk in another location on the network.

Note: It is NOT recommended to save the full system backup on a local hard disk, as the purpose of archiving is to keep a copy of the data in another location, in case of main server or hard drive failure.

Click on OK.



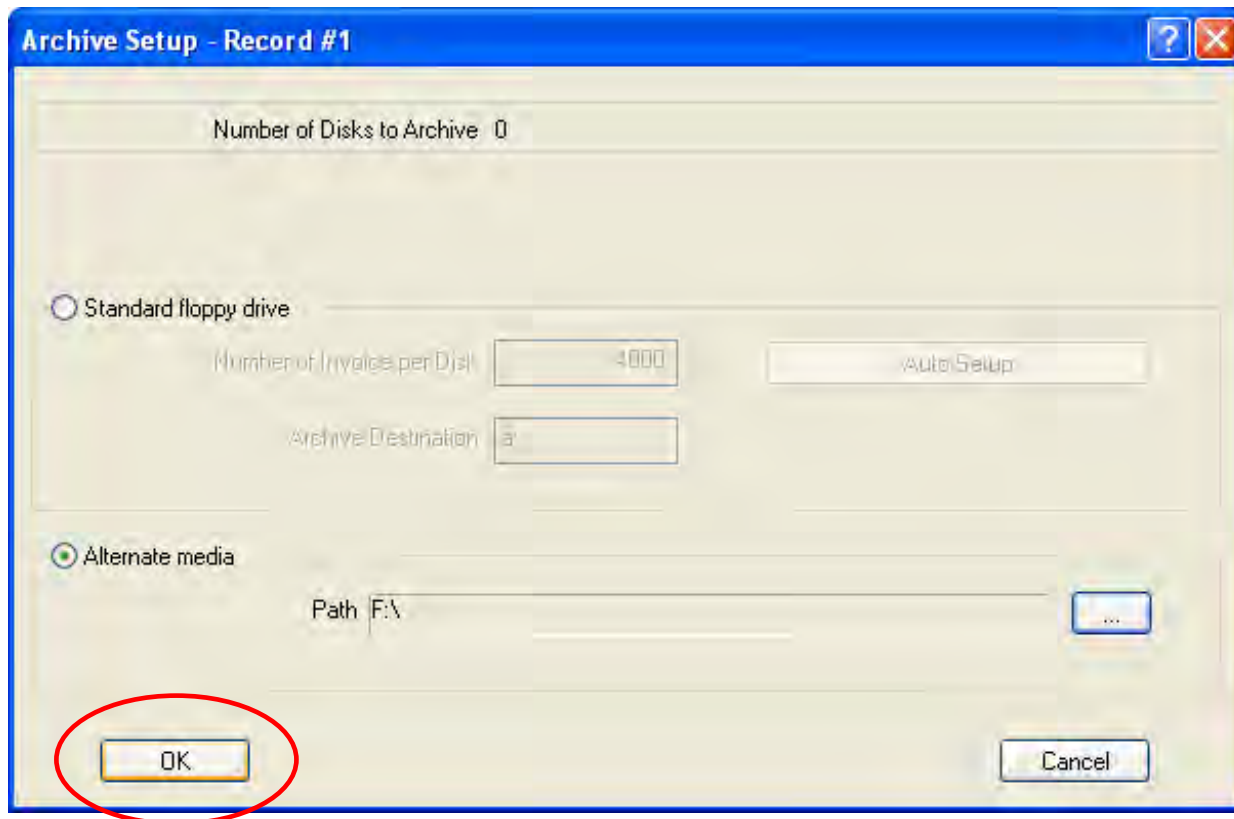


Step 2: Archiving Setup on Source

Click to continue

Click on OK once more.

Note: The Source Archive Setup only needs to be configured once.





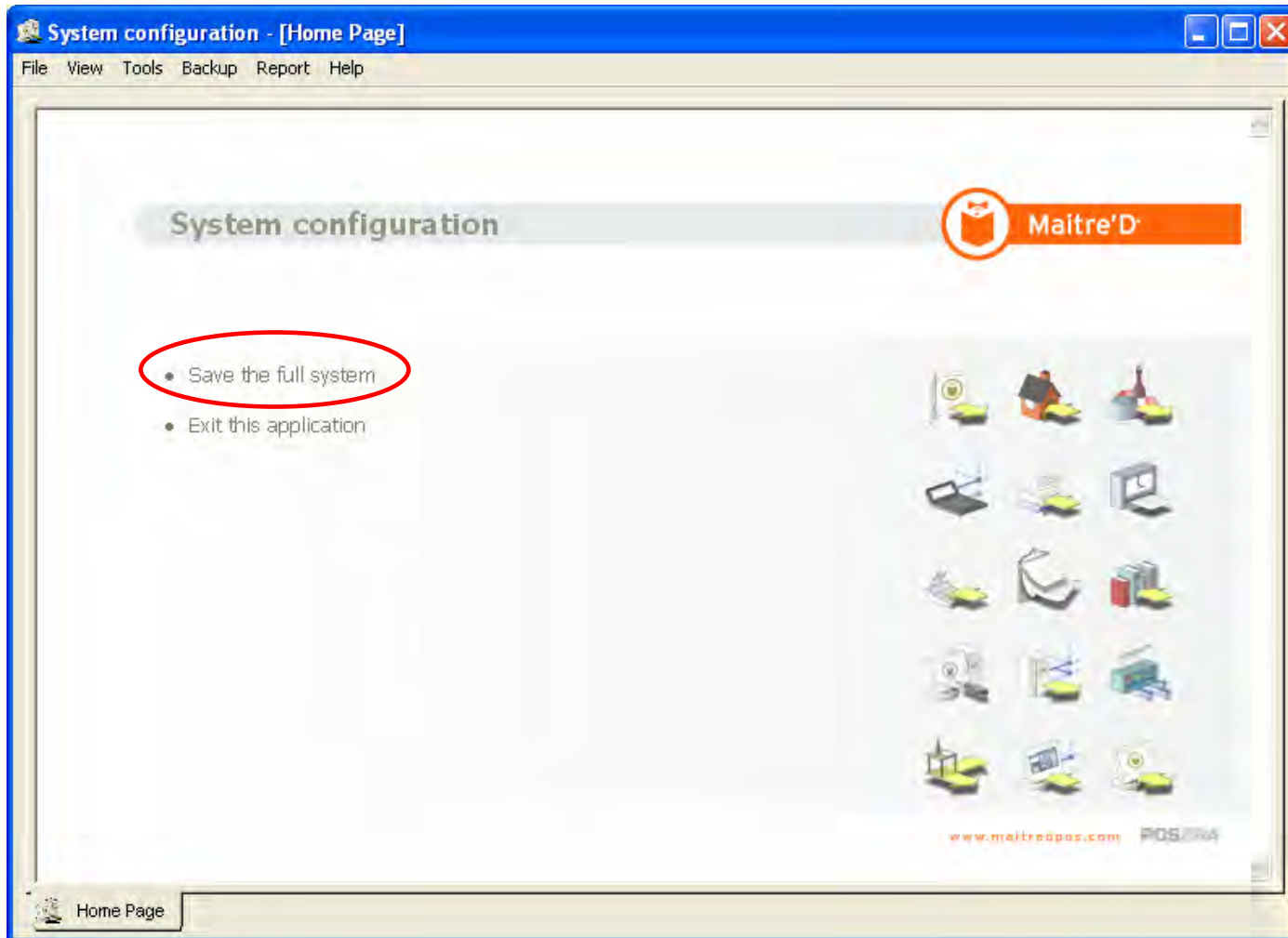
Step 3: Save the Full System



Step 3: Save the Full System

Click to continue

Click Save The Full System.

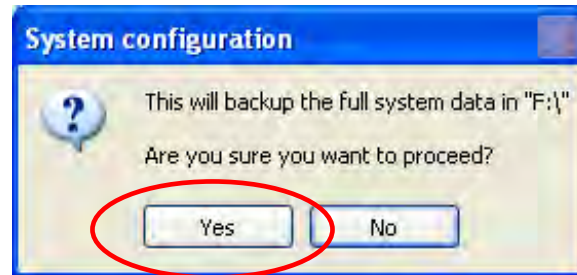




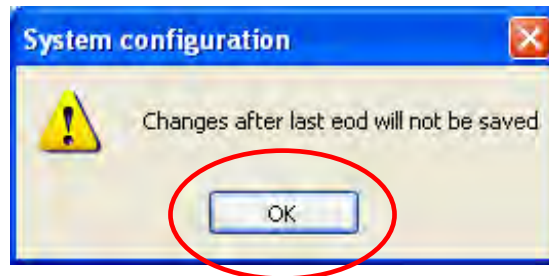
Step 3: Save the Full System

Click to continue

When prompted to proceed, click on YES.



As explained earlier, only changes made before the End Of Day will be backed up. Click on OK.



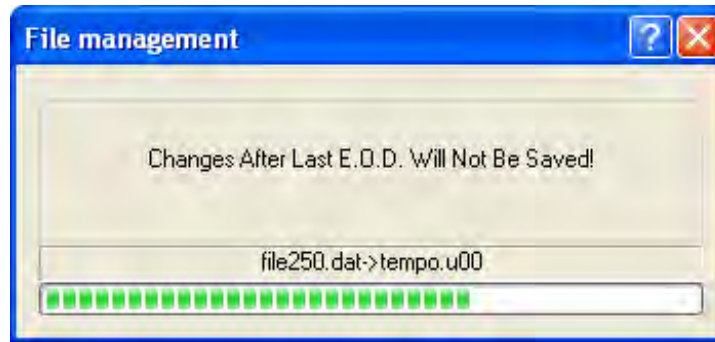


Step 3: Save the Full System

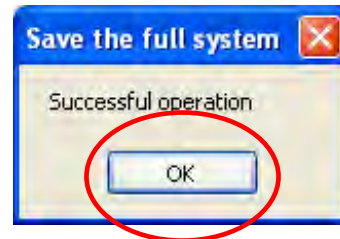
[Click to continue](#)

The internal Database copy is written unto the removable media or the remote Hard Disk.

Note: Any sales performed since the last End Of Day are also copied.



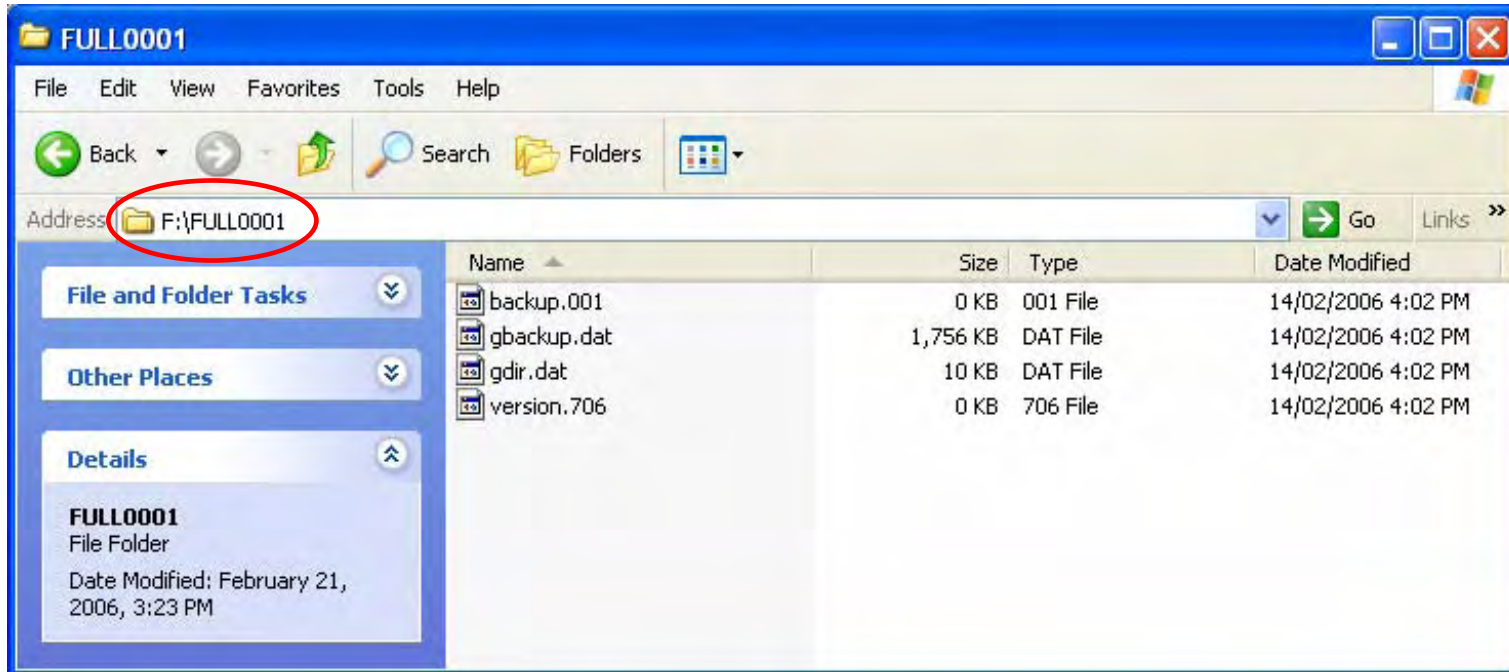
Once the copy is completed, click on OK.



Step 3: Save the Full System

Click to continue

The resulting Full System Backup ends up in the FULL0001 folder under the Archive Setup path.





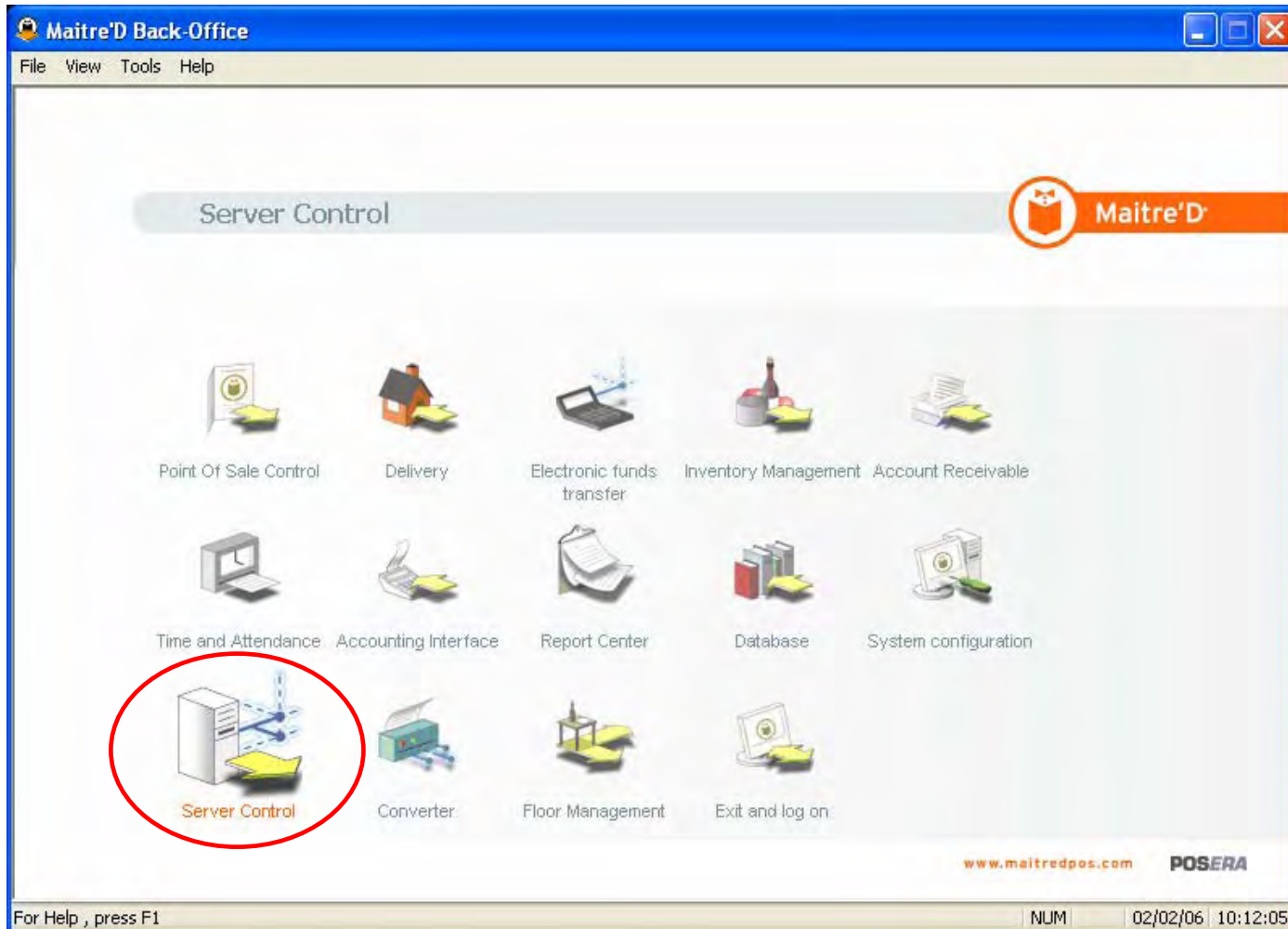
Step 4: End Of Day on Target



Step 4: End Of Day on Target

Click to continue

The End Of Day must be done on the Target PC before overwriting the database. On the Maitre'D Back-Office screen, click on the Server Control icon.

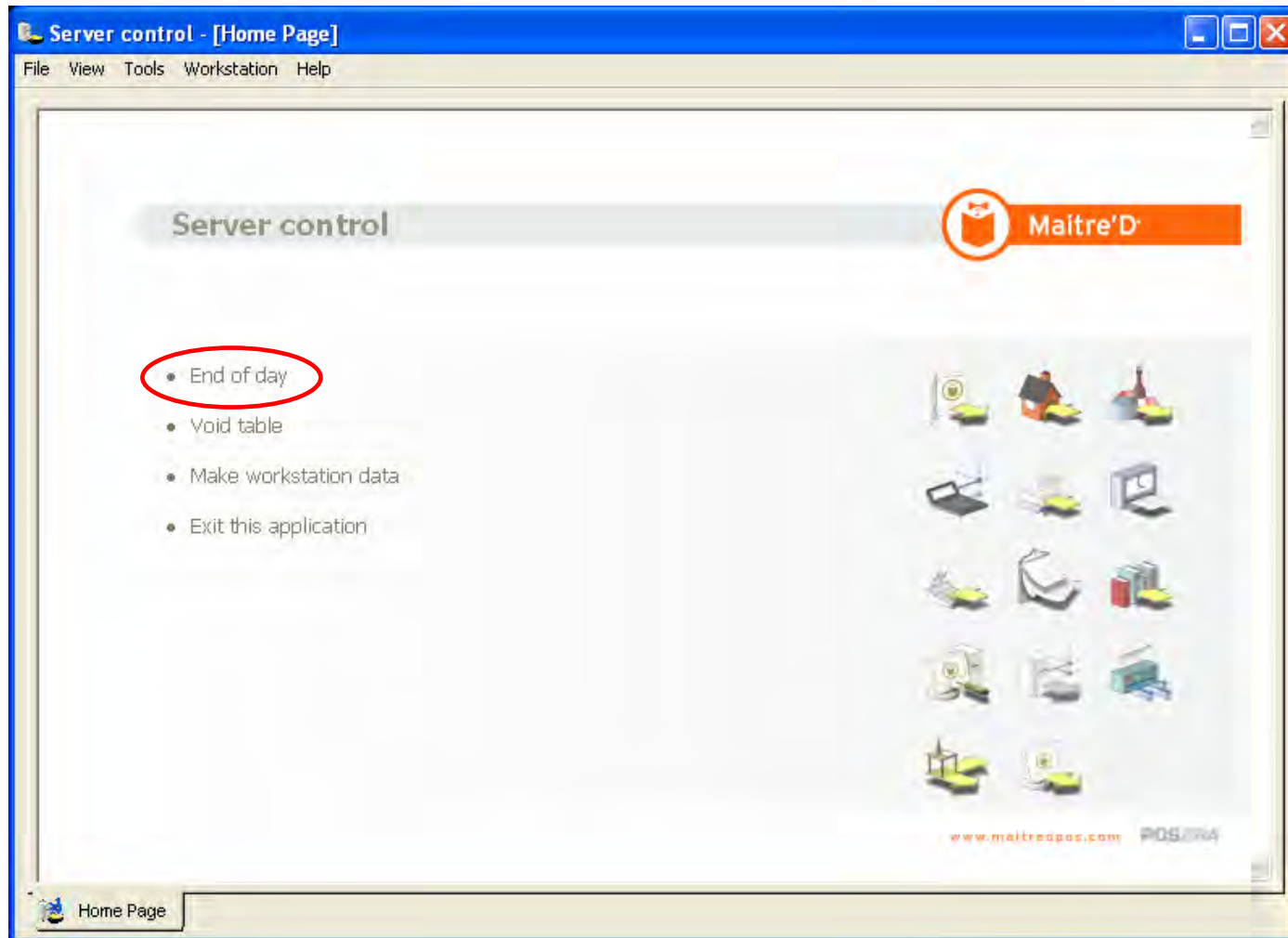




Step 4: End Of Day on Target

Click to continue

Click on End Of Day.

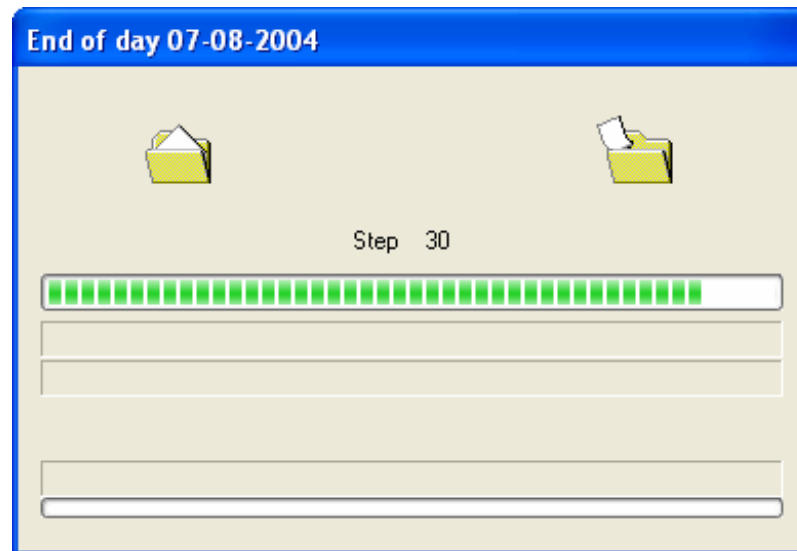
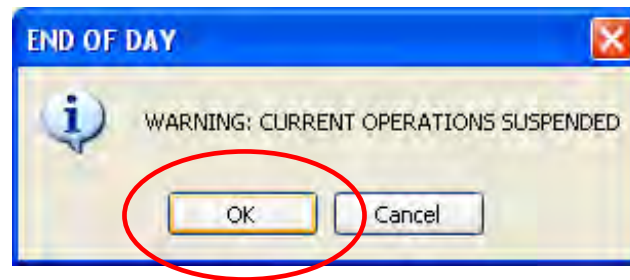




Step 4: End Of Day on Target

Click to continue

When prompted to stop workstation operations, click on OK.

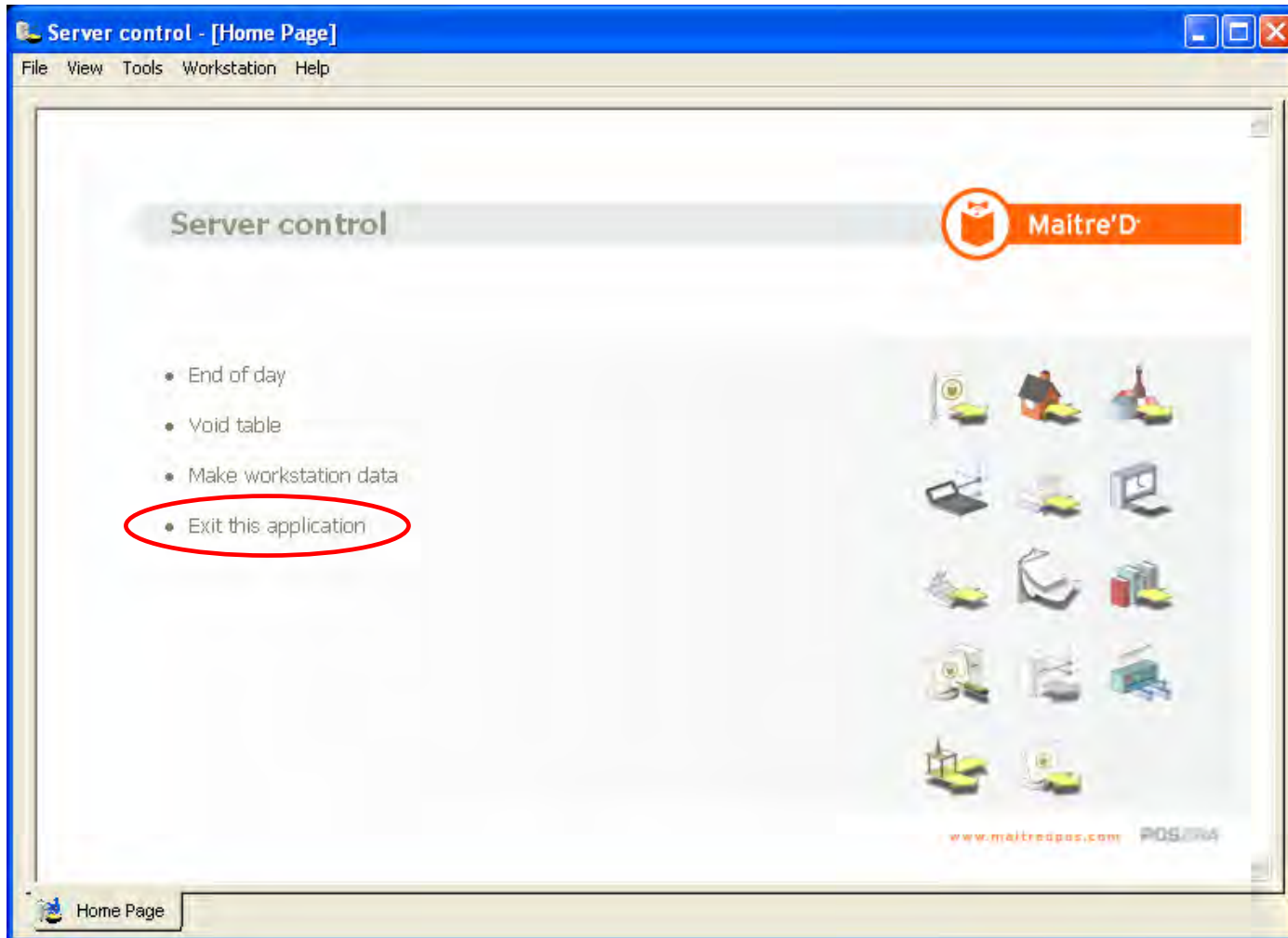




Step 4: End Of Day on Target

Click to continue

Once the End Of Day is completed, exit from the Server Control module.





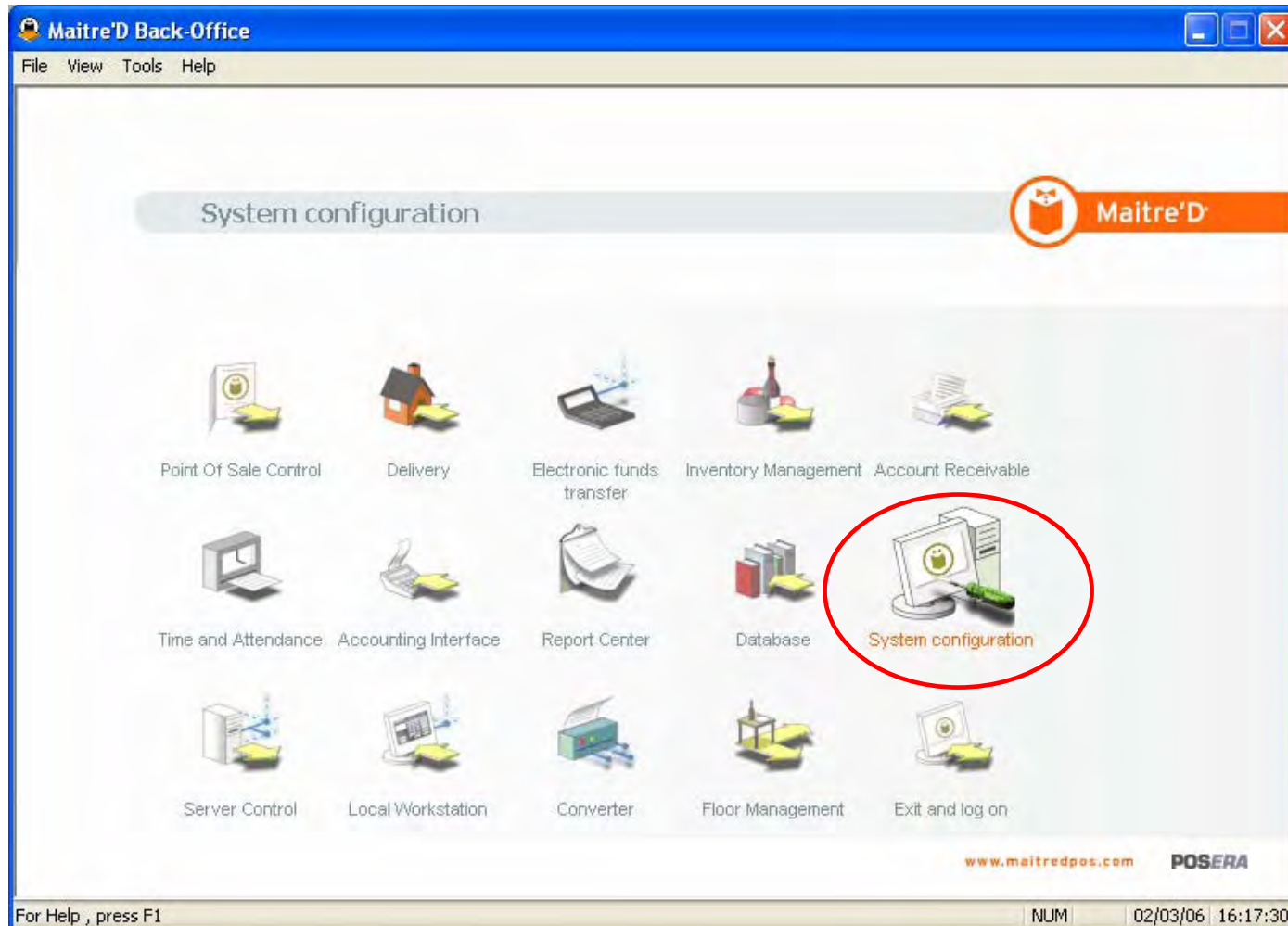
Step 5: Archiving Setup on Target



Step 5: Archiving Setup on Target

Click to continue

On the Maitre'D Back-Office screen, click on the System Configuration icon.

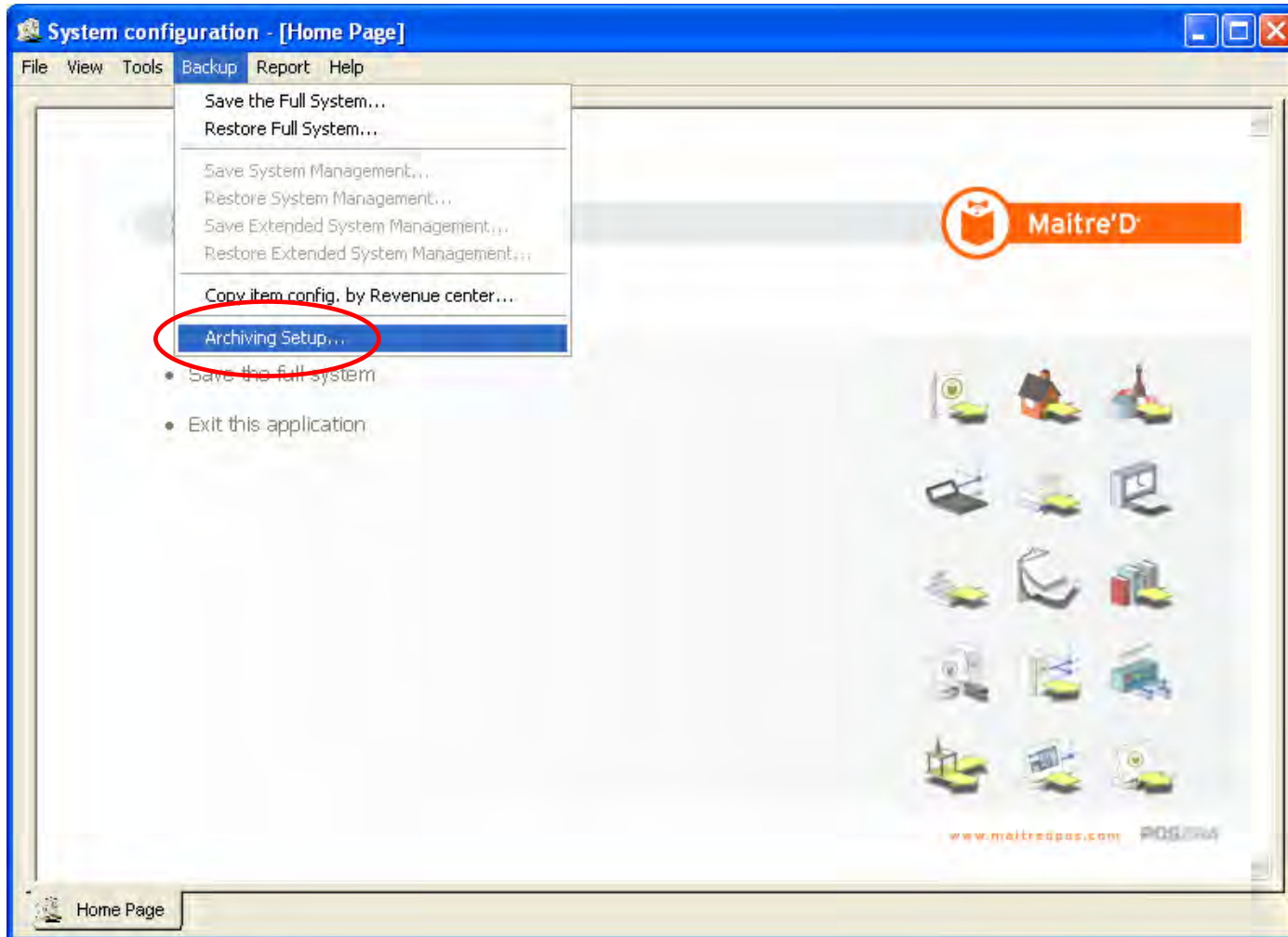




Step 5: Archiving Setup on Target

Click to continue

Click on Backup, then click on Archiving Setup.



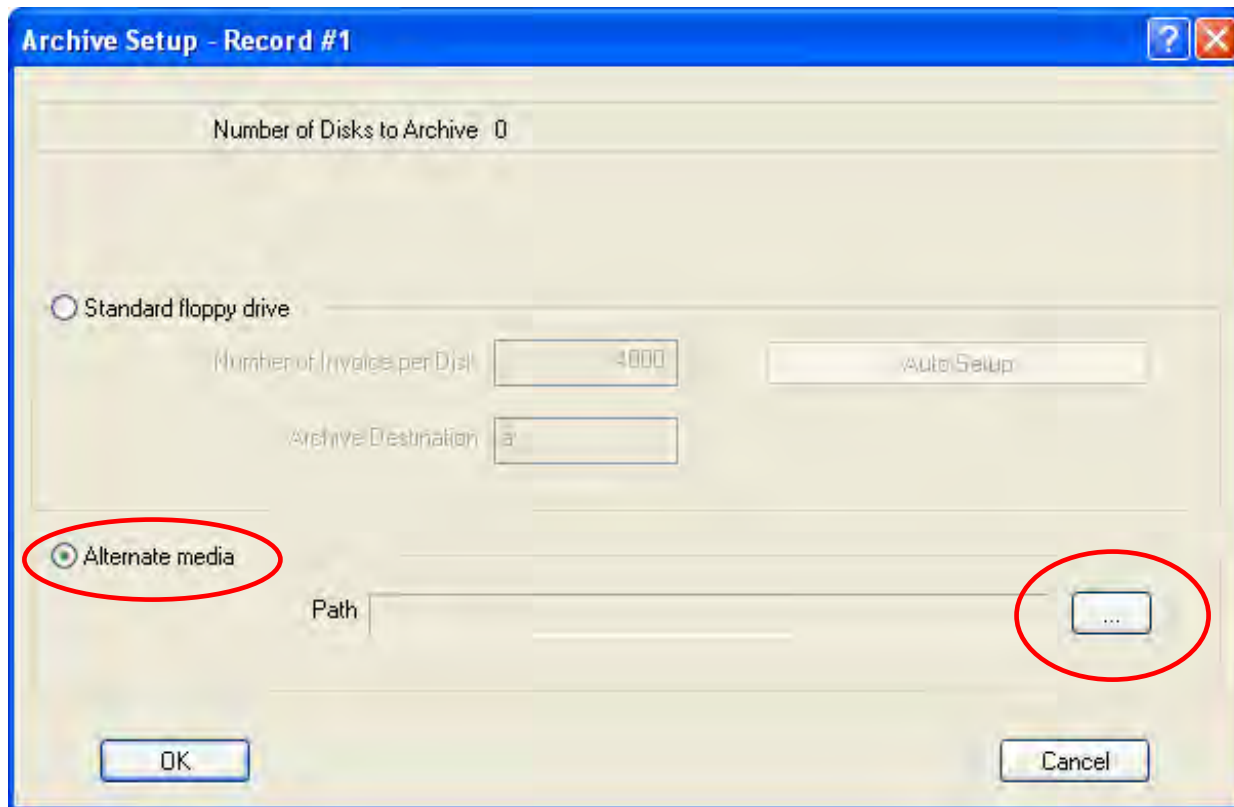


Step 5: Archiving Setup on Target

Click to continue

Enable the Alternate Media option.

Click on the Path button.



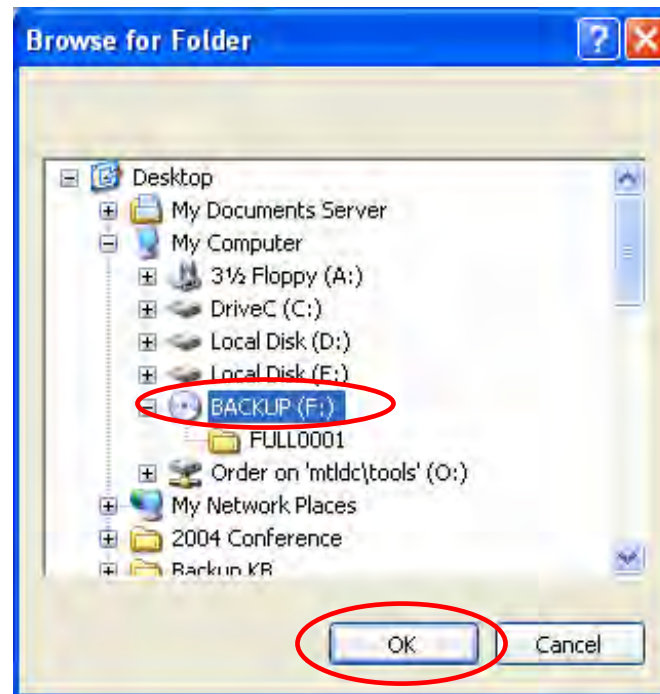


Step 5: Archiving Setup on Target

[Click to continue](#)

Select the location of the high capacity removable media taken from the source computer.
Note: Do NOT select the FULL0001 folder itself, but rather the level just above it.

Click on OK.



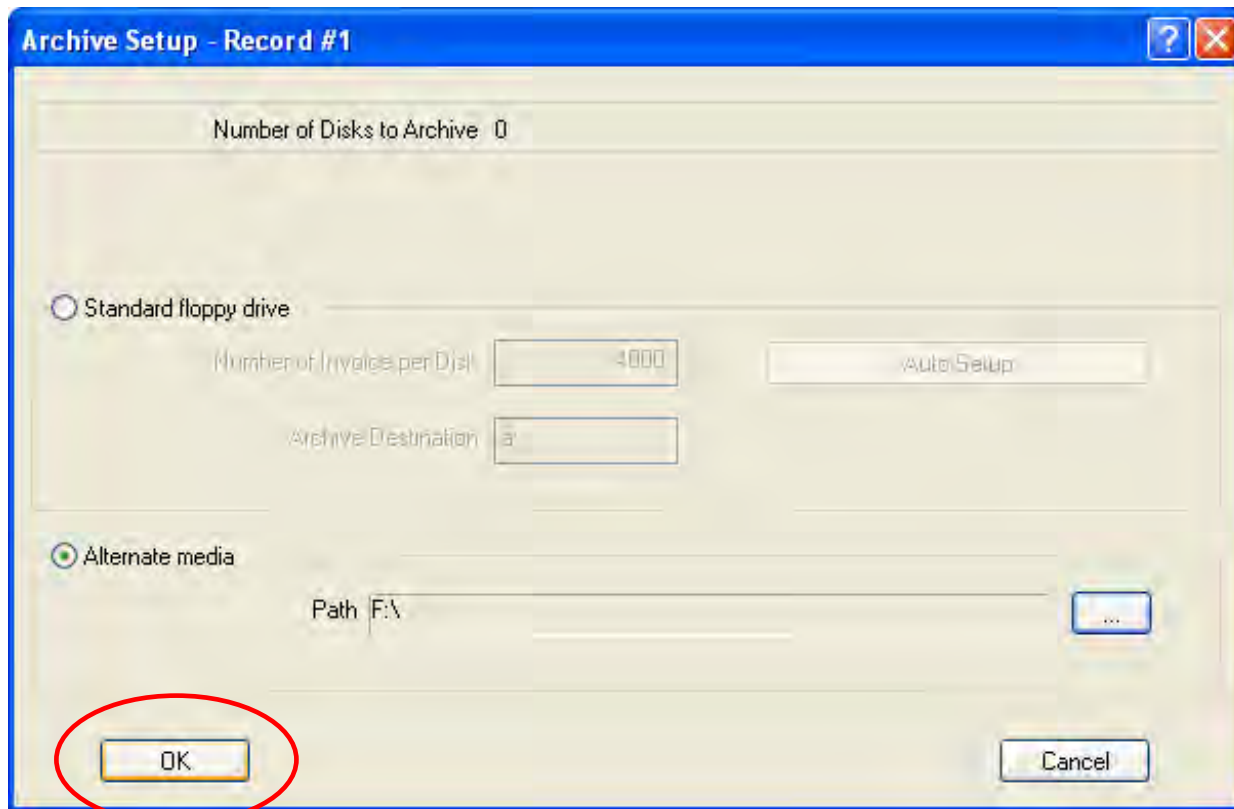


Step 5: Archiving Setup on Target

Click to continue

Click on OK once more.

Note: The Target Archive Setup only needs to be configured once.





Step 6: Restore the Full System



IMPORTANT:

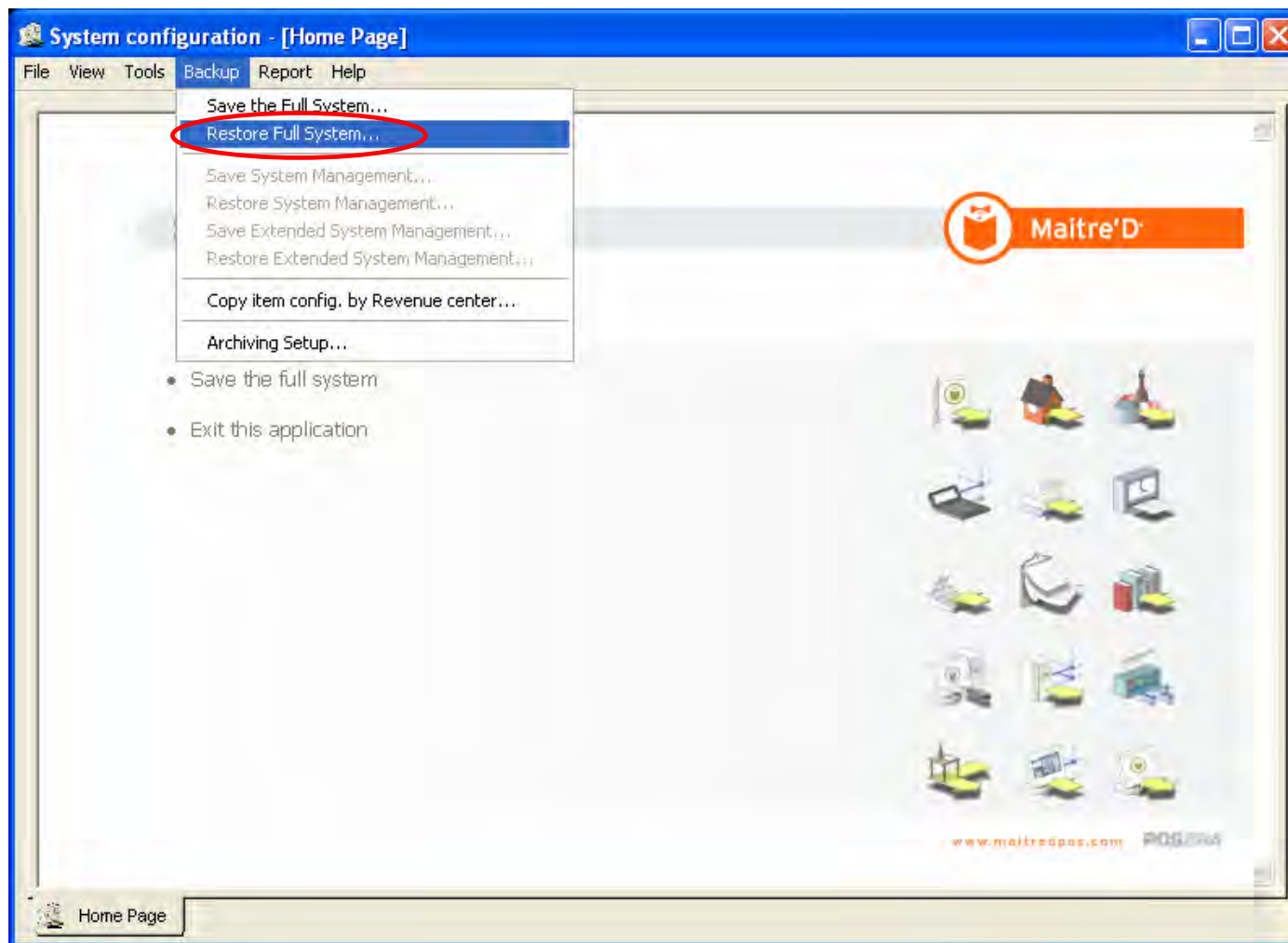
If you want to save the current database before restoring a new full system from the source PC over it, repeat step 3 to save the current full system of the target PC.



Step 6: Restore the Full System

Click to continue

Click on Backup, then click on Restore Full System.

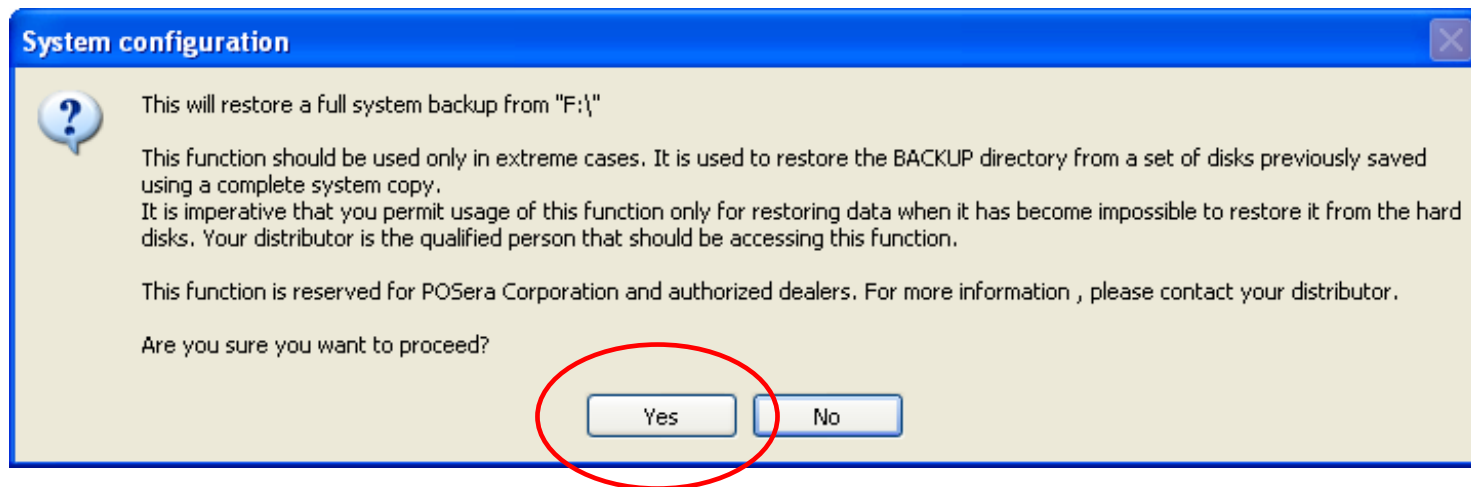




Step 6: Restore the Full System

Click to continue

When prompted to proceed, click on YES.

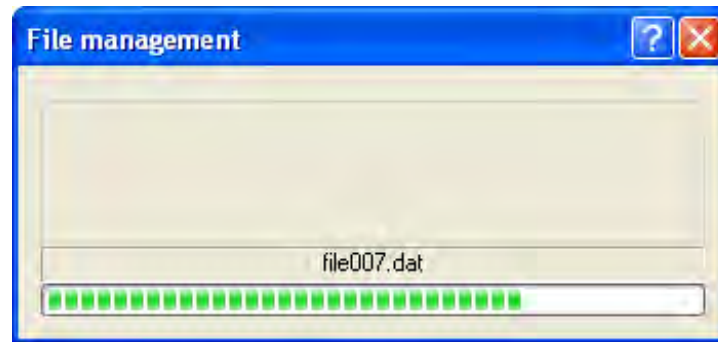




Step 6: Restore the Full System

Click to continue

The Database is copied from the removable media.

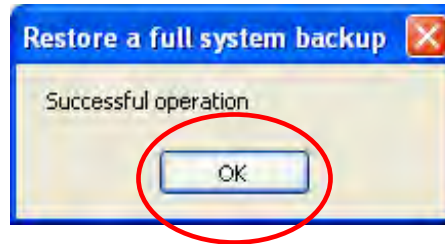




Step 6: Restore the Full System

[Click to continue](#)

Once the copy is completed, click on OK.

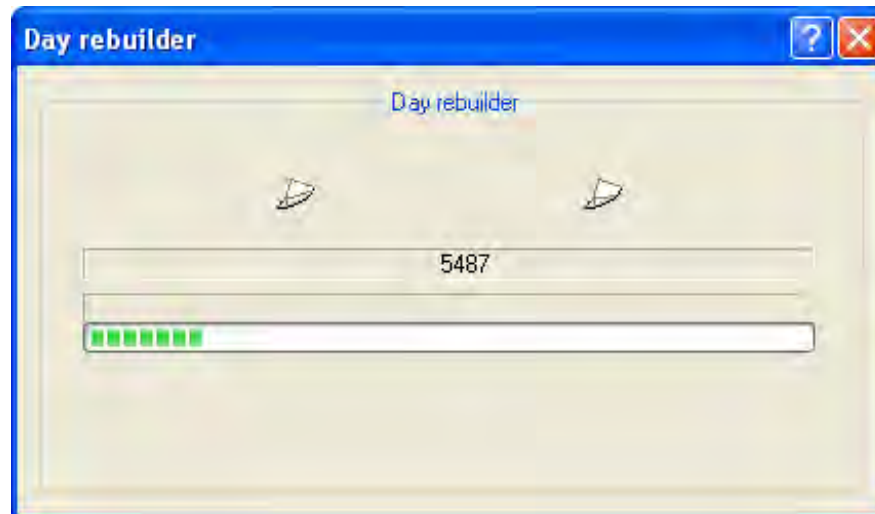




Step 6: Restore the Full System

Click to continue

An automatic Day Rebuild will occur in case any sales were performed on the source computer since the last End Of Day.

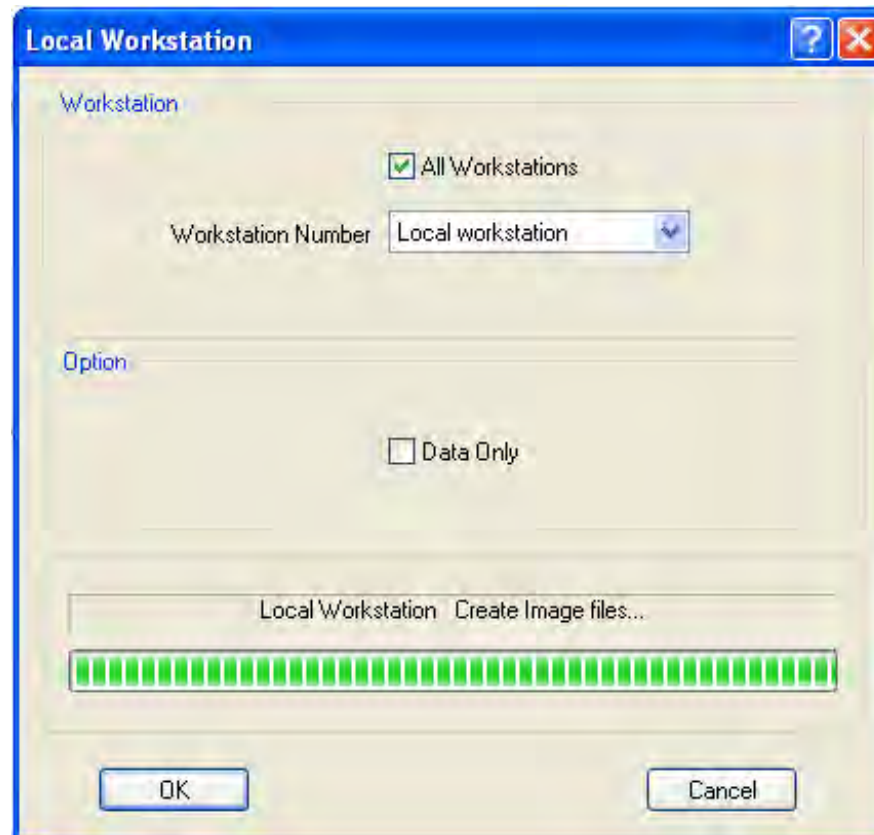




Step 6: Restore the Full System

[Click to continue](#)

Wait for the creation of All Workstations Data to be done.

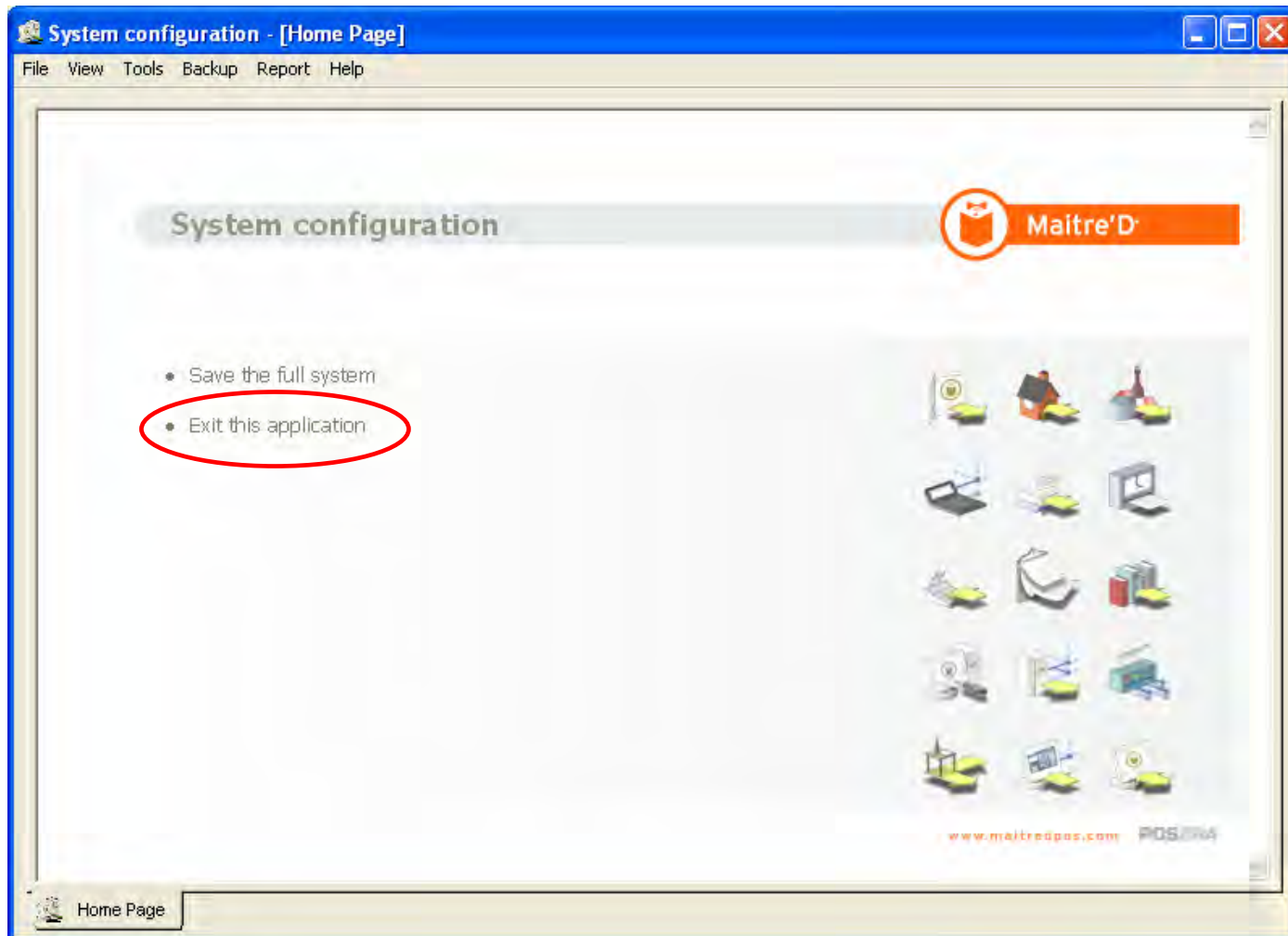




Step 5: Restore the Full System

Click to continue

Exit the System Configuration module.





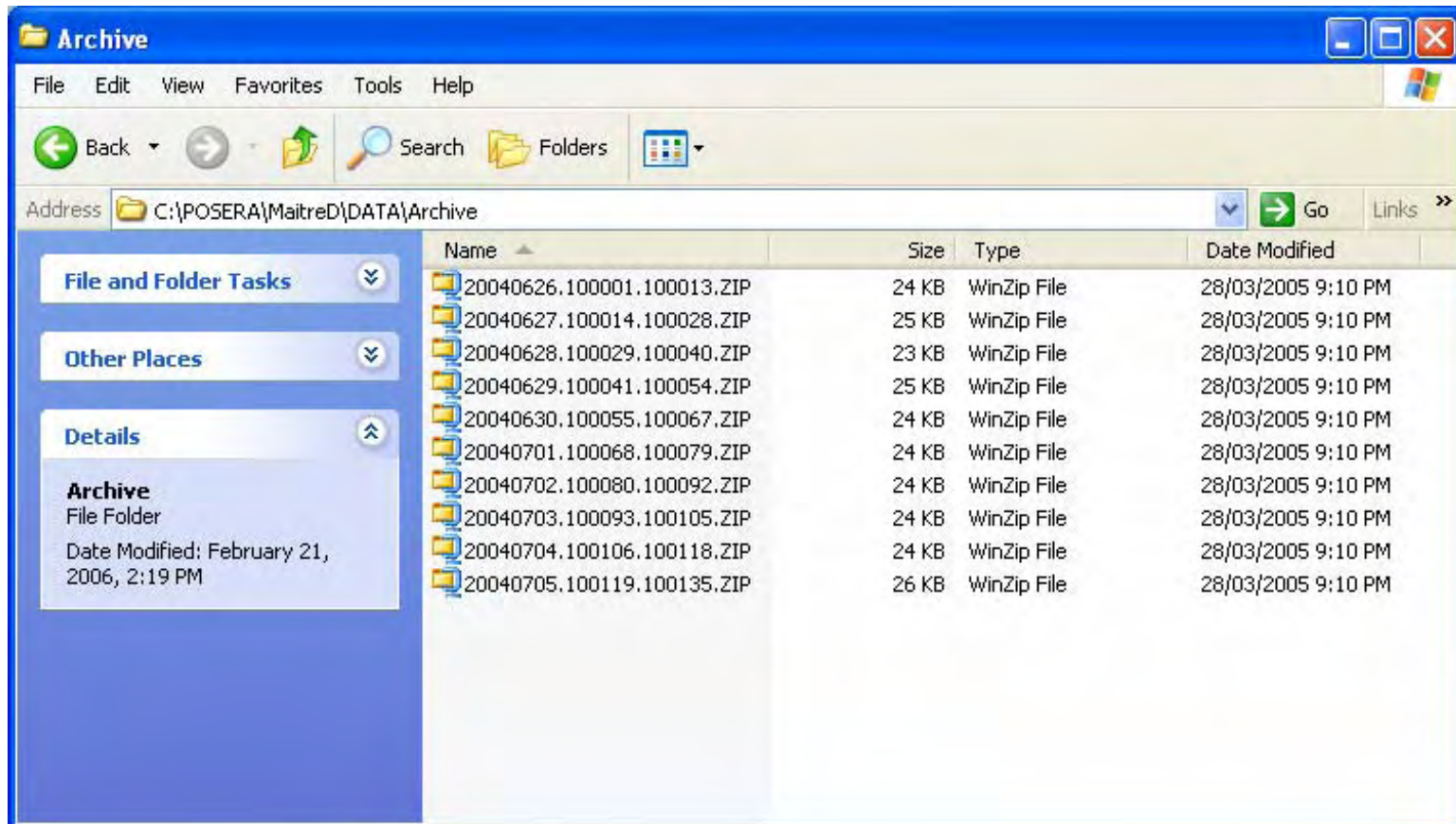
Step 7: Archived Checks



Step 7: Archived Checks

[Click to continue](#)

Archived Checks are not included in the Full System Backup, and contain all past transactions. To have access to all reports on past sales, you must copy them all manually from the source to the target in the C:\Posera\MaitreD\Data\Archive path.



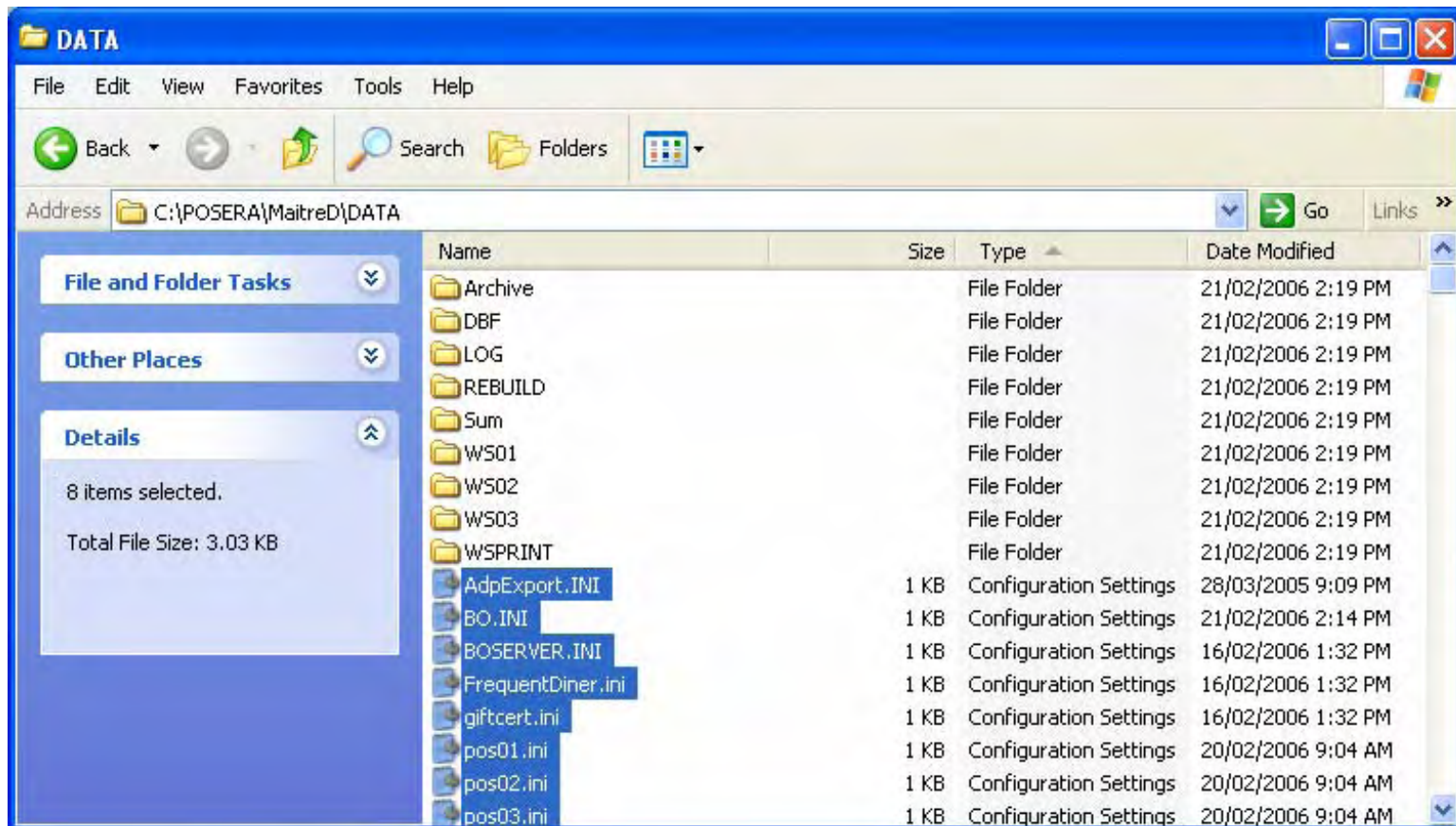


Step 8: INI Files

Step 8: INI Files

[Click to continue](#)

INI files are not included in the Full System Backup, and may contain edits done manually. To avoid having to edit them all again using Notepad, you can copy them manually from the source to the target in the C:\Posera\MaitreD\Data path.





Full System Backup & Restore

[Click to end](#)

This concludes the “Maitre'D Full System Backup & Restore” presentation.

We hope that this document helped you to understand the steps needed to Backup the Maitre'D Database.